



Corinte II EC®

Design air curtain

Type Corinte II EC® M/G

Corinte II EC® beschrijving

The Corinte II is intended for exclusive shop entrances and other environments with high demands in respect of design and soundlevel. Mounted with one unit on either side of the opening, or with a unit on both sides, thus creating a classic symmetry, the curtain effect and comfort is optimized.

The Corinte II is a stylish and exclusive air curtain for horizontal or vertical installation. Compared to the Corinte I, the new and improved Corinte II is even smaller!

Corinte II EC® casing

Self-supporting construction of sheet steel or stainless steel housing without any visible screw connections. The intake grille and aluminium discharge fins can be powder coated in the same RAL-color as the unit. The service hatch is located at the side of the unit and can be opened for easy maintenance. The water and electrical connections can either be connected from the bottom or top, upon your request. The unit can be discreetly bolted in place via pre-made holes in the floor console.

Corinte II EC® EC fans

The efficiency of the EC fans used by Frico is > 90% under partial load operation. This is 30–35% higher than for conventional AC fans. This doesn't just increase the efficiency, but also reduces the operating costs. The individually-driven radial EC fans with integrated motor protection have an air inlet from both sides. They have vibration-free bearings and are controlled using a PWM signal (pulse width modulation). They don't just comply with Directive ErP2015, but actually exceed this standard.

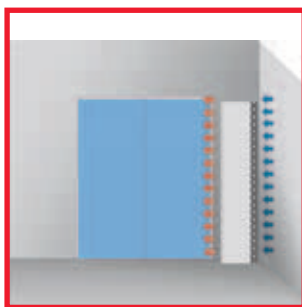
Corinte II EC® controls

For optimal performance of the air curtain it's important to set the discharge fin(s) to the right position. They should be directed slightly outward. If the air curtain is placed between 0-30cm from the door, 10° is recommended. If it's placed more than 30cm from the door, we recommend 15°. If the air curtain is used in combination with airconditioning, the fin(s) can be directed 10-15° inward in the summer, to keep the conditioned air inside.

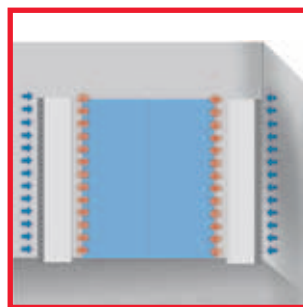
A Corinte II EC® air curtain works.

LSA, pleasantly different.

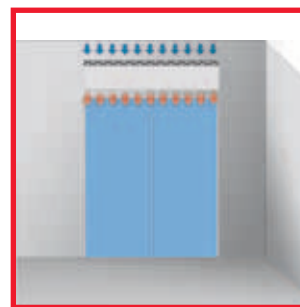
Installation options



Single installation
Left or right side of the opening.



Double installation
For wide entrances.



Freely suspended installation
For opening heights of 2,5 up to 3,6 meters. When there's insufficient space on the sides.

Technical data Corinte II EC®

Type	Length	Air volume	Heating capacity LPHW	Water resist-	Heating capacity LPHW	Water resist-	Water connections	Heating capacity electric	Electric connections fans			Sound pres-	Weight
	mm	m³/h	80/60°C ≈ Δ 18°C kW **	ance LPHW 80/60°C kPa	60/40°C ≈ Δ 15°C kW **	ance LPHW 60/40°C kPa	Internal thread"	400 V kW	Nominal power			sure lvl min/max dB(A)*	kg
									Volt 50	kW	A		

Corinte II EC® M recommended mounting height (bottom of the air curtain) / air throw of max. 2,50 meters

M 1000 P	1000	1816	11,30	5,20	9,70	6,30	2 x 3/4"	-	230	0,30	2,10	44/58	44
M 1500 P	1500	2724	15,70	3,60	13,30	7,90	2 x 3/4"	-	230	0,50	3,10	44/59	53
M 2000 P	2000	3632	22,60	10,00	20,80	7,80	2 x 3/4"	-	230	0,60	4,10	45/60	83
M 2500 P	2500	4540	27,60	4,80	24,10	5,80	2 x 3/4"	-	230	0,80	5,13	46/61	110
M 3000 P	3000	6356	61,54	15,76	43,68	8,51	2 x 3/4"	-	230	0,90	7,20	47/62	126
M 1000 E	1000	1816	-	-	-	-	-	3/6/9	230	0,30	2,10	44/58	44
M 1500 E	1500	2724	-	-	-	-	-	4/8/12	230	0,50	3,10	44/59	53
M 2000 E	2000	3632	-	-	-	-	-	6/12/18	230	0,60	4,10	45/60	83
M 2500 E	2500	4540	-	-	-	-	-	6/12/18	230	0,80	5,13	46/61	110
M 3000 E	3000	6356	-	-	-	-	-	6/12/18	230	0,90	7,20	47/62	126

Corinte II EC® G recommended mounting height (bottom of the air curtain) / air throw of max. 2,80-3,00 meters

G 1000 P	1000	2724	15,50	2,27	10,80	7,80	2 x 3/4"	-	230	0,50	3,10	45/60	47
G 1500 P	1500	3632	22,60	7,30	18,10	14,40	2 x 3/4"	-	230	0,60	4,10	46/61	65
G 2000 P	2000	5448	33,50	5,50	26,10	12,20	2 x 3/4"	-	230	0,90	6,15	47/62	90
G 2500 P	2500	6356	39,60	7,50	32,60	10,30	2 x 3/4"	-	230	1,10	7,20	47/63	116
G 3000 P	3000	7264	67,13	18,53	48,15	10,18	2 x 3/4"	-	230	1,20	8,20	48/64	137
G 1000 E	1000	2724	-	-	-	-	-	5/10/15	230	0,50	3,10	45/60	47
G 1500 E	1500	3632	-	-	-	-	-	7,5/15/22,5	230	0,60	4,10	46/61	65
G 2000 E	2000	5448	-	-	-	-	-	10/20/30	230	0,90	6,15	47/62	90
G 2500 E	2500	6356	-	-	-	-	-	10,7/21,4/32	230	1,10	7,20	47/63	116
G 3000 E	3000	7264	-	-	-	-	-	10,7/21,4/32	230	1,20	8,20	48/64	137

* Measured at 3m distance.

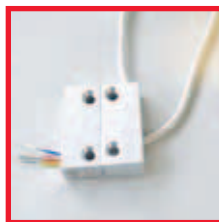
Subject to technical modifications.



Connection cable between control and air curtain



Thermostatic 3-way valve



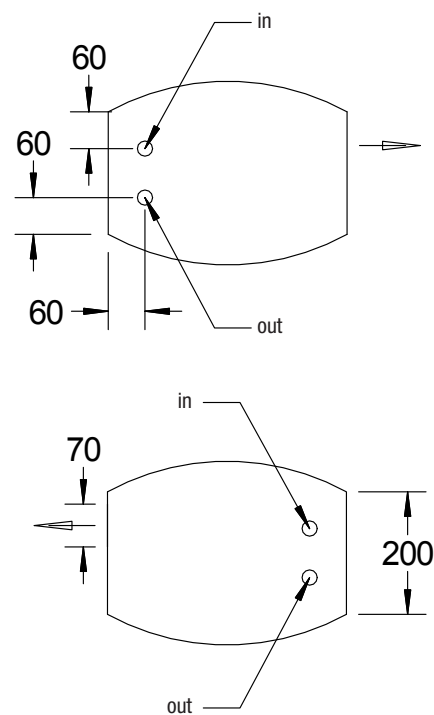
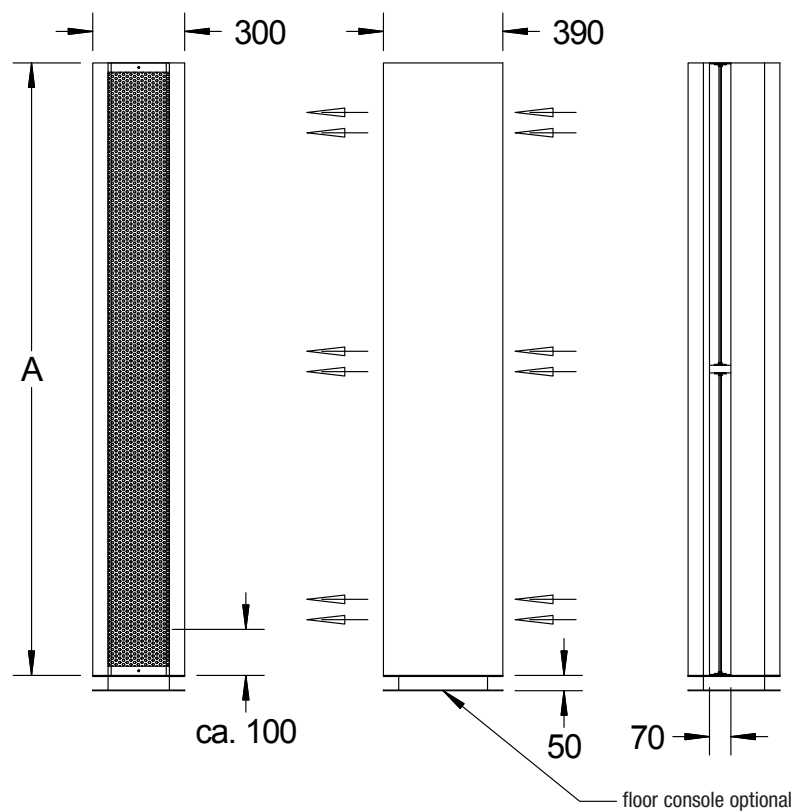
Doorcontact



Ceiling mounting kit

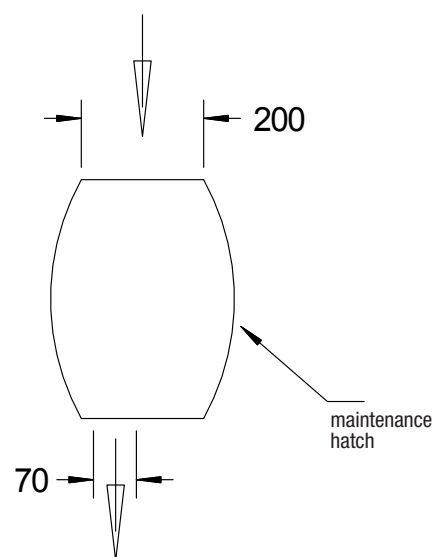
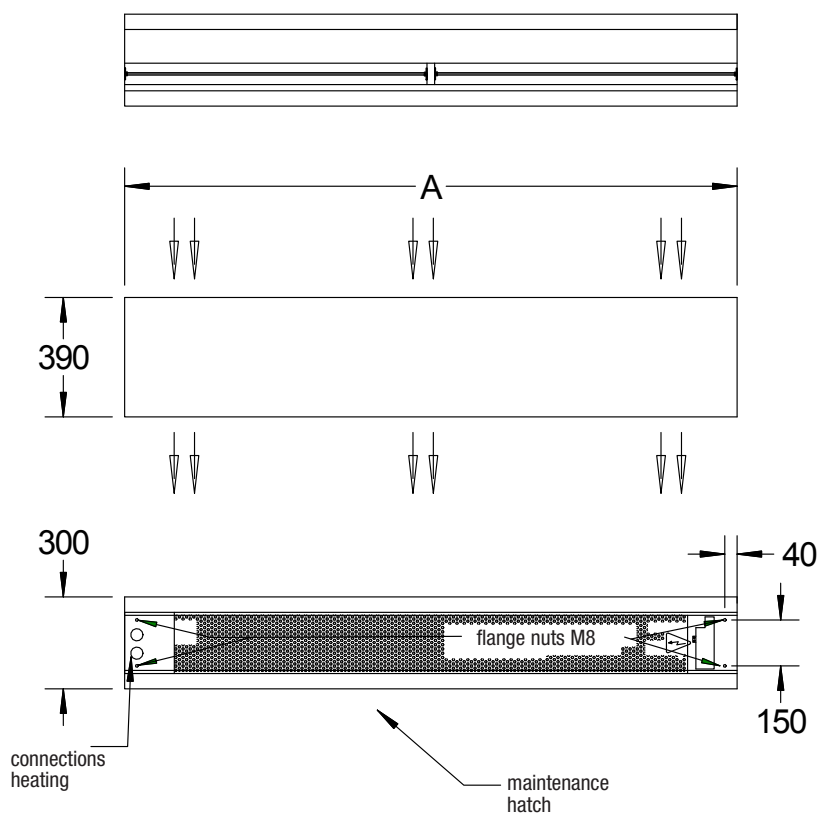
Technical drawings **Corinte II EC®**

Vertical installation



A = length air curtain

Horizontal installation



A = length air curtain

Overview different installations



Frico BV

Van Leeuwenhoekstraat 2, 3846 CB Harderwijk, The Netherlands

T +31 (0)341-439100 **F** +31 (0)341-439190

E info@fricobv.nl **I** www.frico.se/en/