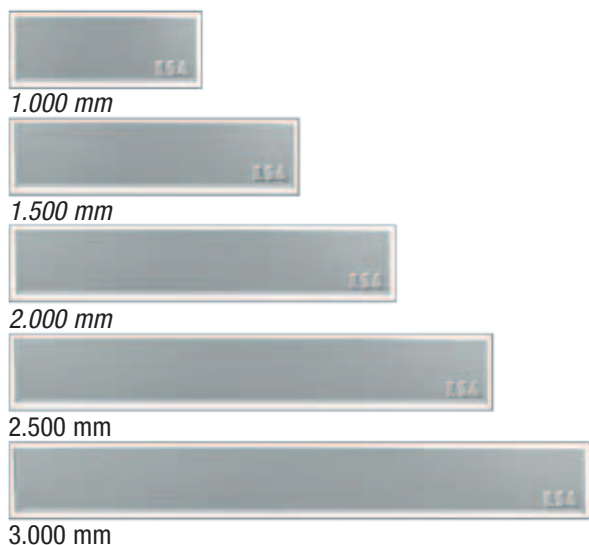


Effect EC®

Air curtain for every interior

Type **Effect EC®** S/M/G/GX/GXX

Effect EC® Standard lengths



Effect EC® Height

S/M/G

GX/GXX



Effect EC®



Effect EC®

Supplied as standard with LPHW **60/40°C** or electric heating element. Capacities for other temperatures can be calculated on request.

Effect EC®

The discharge fins are adjustable in 5 steps:

- vertically
- 10° and 15° directed outwards for **heating (Winter mode)**
- 10° and 15° directed inwards for **airconditioning (Summer mode)**



The water connections on our air curtains are placed at the top on the left side as standard. It's possible to move them to the right side on top or to either the left or right side of the unit.

Effect EC®

The electronic control is suited for connection of a solenoid valve or circulation pump up to 2,5 A. The controller is supplied as standard with an option for summer and wintermode (solenoid valve closed or opened). A potential free contact can be connected to every desired building management system.

Effect EC®

A 2- or 3-way valve can easily be connected to the water pipes.

Effect EC®

For recessed (GP) or above the ceiling (BP) mounting, the appropriate accessories can be supplied separately.

Effect EC®

As standard supplied with 20 meters of shielded cable with an RJ45 connection. Multiple air curtains can be connected to one controller. When ordered together the cables for master-slave connection will be supplied.

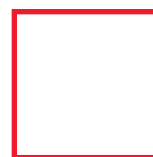
Effect EC®

Delivered from stock from the Netherlands.

An Effect EC® air curtain works.

LSA, pleasantly different.

Effect EC® as standard available in colors:



RAL 9016
(white)



RAL 9006
(grey)

Technical data **Effect EC®/AC®**

Type	Length	Air volume	Heating capacity LPHW 80/60°C ≈ Δ 18°C	Water resistance LPHW 80/60°C	Heating capacity LPHW 60/40°C ≈ Δ 15°C	Water resistance LPHW 60/40°C	Water connections	Heating capacity electric	Electric connections fans			Sound pressure l/min/max	Weight
	mm	m³/h	kW **	kPa	kW **	kPa	Internal thread"	400 V kW	Nominal power				kg
									Volt 50 Hz	kW	A	dB(A)*	

Effect EC® S recommended mounting height (bottom of the air curtain) max. 2,20 meters above floor

S 1000P	1000	1200	10,17	4,68	8,73	5,67	2 x 3/4"	-	230	0,27	1,89	43/57	45
S 1500P	1500	1800	14,13	3,24	11,97	7,11	2 x 3/4"	-	230	0,45	2,79	44/58	76
S 2000P	2000	2400	20,34	9,00	18,72	7,02	2 x 3/4"	-	230	0,54	3,69	44/59	106
S 2500P	2500	3000	24,84	4,32	21,69	5,22	2 x 3/4"	-	230	0,72	4,62	45/60	135
S 1000E	1000	1200	-	-	-	-	-	3/6/9	230	0,27	1,89	43/57	45
S 1500E	1500	1800	-	-	-	-	-	4/8/12	230	0,45	2,79	44/58	76
S 2000E	2000	2400	-	-	-	-	-	6/12/18	230	0,54	3,69	44/59	106
S 2500E	2500	3000	-	-	-	-	-	6/12/18	230	0,72	4,62	45/60	135

Effect EC® M recommended mounting height (bottom of the air curtain) max. 2,50 meters above floor

M 1000 P	1000	1816	11,30	5,20	9,70	6,30	2 x 3/4"	-	230	0,30	2,10	44/58	45
M 1500 P	1500	2724	15,70	3,60	13,30	7,90	2 x 3/4"	-	230	0,50	3,10	44/59	76
M 2000 P	2000	3632	22,60	10,00	20,80	7,80	2 x 3/4"	-	230	0,60	4,10	45/60	106
M 2500 P	2500	4540	27,60	4,80	24,10	5,80	2 x 3/4"	-	230	0,80	5,13	46/61	135
M 1000 E	1000	1816	-	-	-	-	-	3/6/9	230	0,30	2,10	44/58	45
M 1500 E	1500	2724	-	-	-	-	-	4/8/12	230	0,50	3,10	44/59	76
M 2000 E	2000	3632	-	-	-	-	-	6/12/18	230	0,60	4,10	45/60	106
M 2500 E	2500	4540	-	-	-	-	-	6/12/18	230	0,80	5,13	46/61	135

Effect EC® G recommended mounting height (bottom of the air curtain) max. 2,80-3,00 meters above floor

G 1000 P	1000	2724	15,50	2,27	10,80	7,80	2 x 3/4"	-	230	0,50	3,10	45/60	50
G 1500 P	1500	3632	22,60	7,30	18,10	14,40	2 x 3/4"	-	230	0,60	4,10	46/61	80
G 2000 P	2000	5448	33,50	5,50	26,10	12,20	2 x 3/4"	-	230	0,90	6,15	47/62	110
G 2500 P	2500	6356	39,60	7,50	32,60	10,30	2 x 3/4"	-	230	1,10	7,20	47/63	142
G 1000 E	1000	2724	-	-	-	-	-	5/10/15	230	0,50	3,10	45/60	50
G 1500 E	1500	3632	-	-	-	-	-	7,5/15/22,5	230	0,60	4,10	46/61	80
G 2000 E	2000	5448	-	-	-	-	-	10/20/30	230	0,90	6,15	47/62	110
G 2500 E	2500	6356	-	-	-	-	-	10,7/21,4/32	230	1,10	7,20	47/63	142

Effect AC® GX recommended mounting height (bottom of the air curtain) max. 3,20 meters above floor

GX 1000 P	1000	4800	23,00	12,75	16,60	1,55	2 x 1"	-	230	1,40	8,80	48/64	95
GX 1500 P	1500	5120	35,80	13,58	27,10	3,03	2 x 1"	-	230	1,60	9,60	50/66	125
GX 2000 P	2000	7680	48,70	14,38	37,10	3,41	2 x 1"	-	230	2,50	14,40	50/67	155
GX 2500 P	2500	10240	61,30	14,44	47,30	4,40	2 x 1"	-	230	3,30	19,20	51/68	200

Effect AC® GXX recommended mounting height (bottom of the air curtain) max. 3,60 meters above floor

GXX 1000 P	1000	5120	26,10	15,45	19,70	1,97	2 x 1 1/4"	-	230	1,60	9,60	50/66	110
GXX 1500 P	1500	7680	41,00	17,54	31,40	3,69	2 x 1 1/4"	-	230	2,50	14,40	51/68	145
GXX 2000 P	2000	10240	55,80	18,36	42,60	4,38	2 x 1 1/4"	-	230	3,30	19,20	52/69	180
GXX 2500 P	2500	12800	70,30	18,71	54,80	5,85	2 x 1 1/4"	-	230	4,10	24,00	53/70	225

* Measured at 3m distance. * Effect GX/GXX EC on request.

Subject to technical modifications.

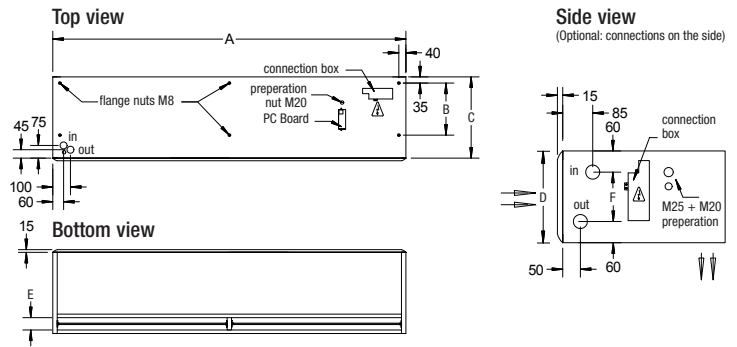
**** LSA air curtains supplied for LPHW 80/60°C or LPHW 60/40°C (supply/return water temperature). Air inlet temperature +20°C. Whether it's pre- mid- or post season, an LSA air curtain works.**



It's important to set the discharge fin(s) to the right position to ensure the optimal performance of the air curtain. They should be directed slightly outwards. If the air curtain is placed between 0-30 cm from the door, 10° is recommended. If it's placed more than 30 cm from the door, we recommend 15°. If the air curtain is used in combination with airconditioning, the fin(s) can be directed 10-15° inwards in the summer, to keep the conditioned air inside.

Effect EC® freely suspended

Type	A	Measurement symbols (mm)				
		B	C	D	E	F
S	A = variable	295	460	260	70	140
M		295	460	260	70	140
G		295	460	260	70	140
GX		510	700	400	110	250
GXX		510	700	400	110	250



Effect EC® installation kit «BP»

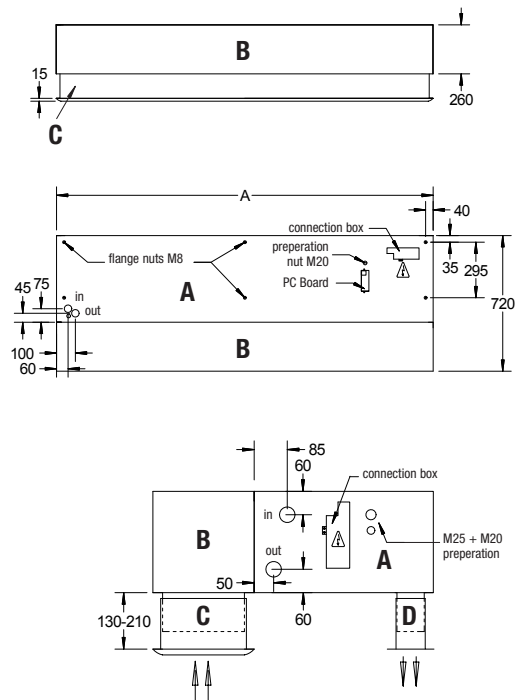
Installation **above** the ceiling.

Inlet

1. Remove the inlet grill (can be popped off) and dismantle the fall protection.
2. Connect inlet chamber (B) to the air curtain (A), using the supplied screws.
3. Connect inlet plenum (C) to the air curtain (A) with the supplied screws. Set the sliding part to the appropriate height and fixate it with screws. Remount the fall protection. Pop the inlet grille on to the inlet plenum (C)

Outlet

4. Remove the discharge fins from the air curtain and mount them in the outlet plenum (D).
5. Connect outlet plenum (D) to the air curtain (A) with the supplied screws. Set the sliding part to the appropriate height and fixate it with screws.



Effect EC® installation kit «GP»

Installation **in** the ceiling (recessed).

1. Remove the inlet grill (can be popped off).
2. Connect inlet chamber (B) to the air curtain (A), using the supplied screws.
3. Dismantle the fall protection.
4. Pop the inlet grille on to the inlet chamber (B)

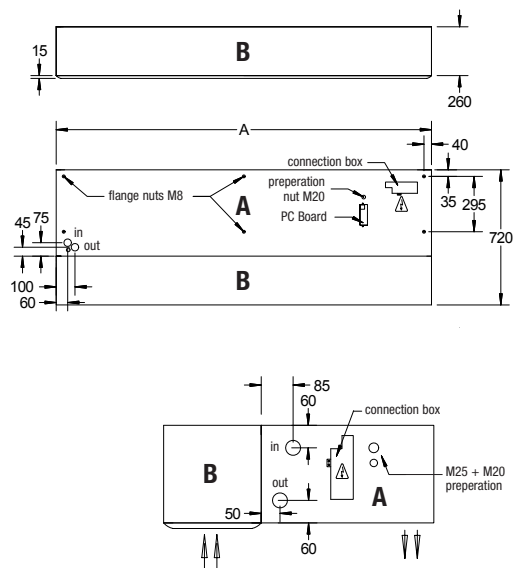
Length:

A: 1000 mm, 1500 mm, 2000 mm, 2500 mm, 3000 mm

Measurements of installation kits GP & BP for GX and GXX units differ from the one for S/M/G units. Measurements can be found in the table at the top of this page.

A = air curtain, B = inlet chamber

C = inlet plenum, D = outlet plenum



Overview different installations



Frico BV

Van Leeuwenhoekstraat 2, 3846 CB Harderwijk, The Netherlands

T +31 (0)341-439100 **F** +31 (0)341-439190

E info@fricobv.nl **I** www.frico.se/en/